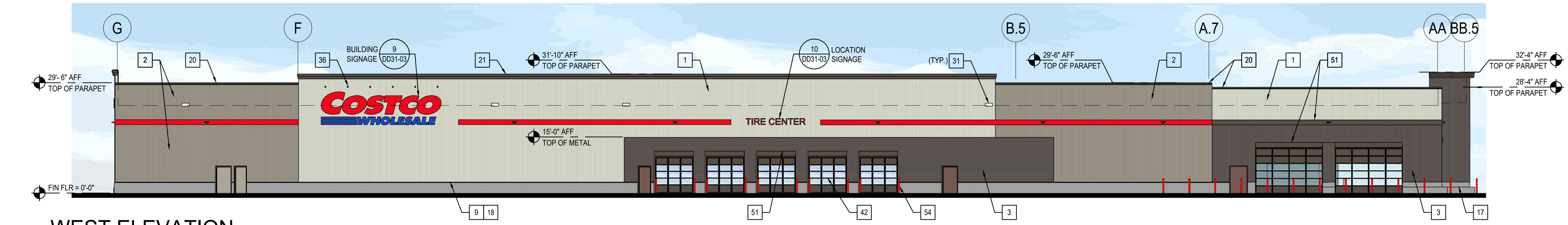
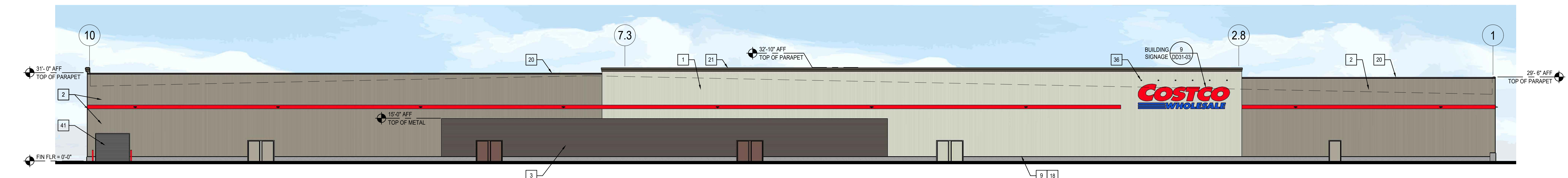


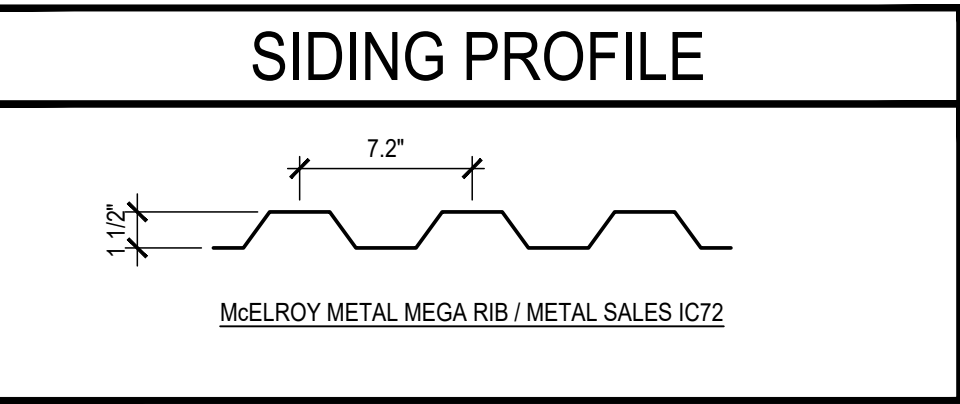
1 NORTH ELEVATION
SCALE: 1/16" = 1'-0"



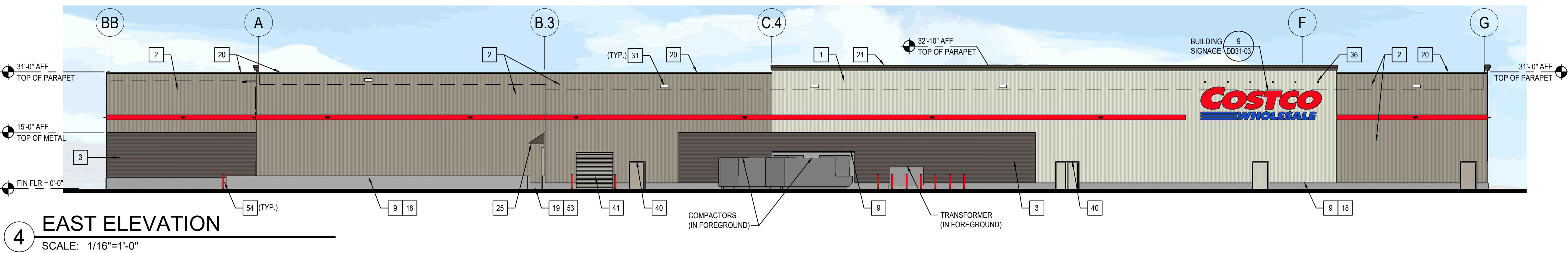
2 WEST ELEVATION
SCALE: 1/16" = 1'-0"



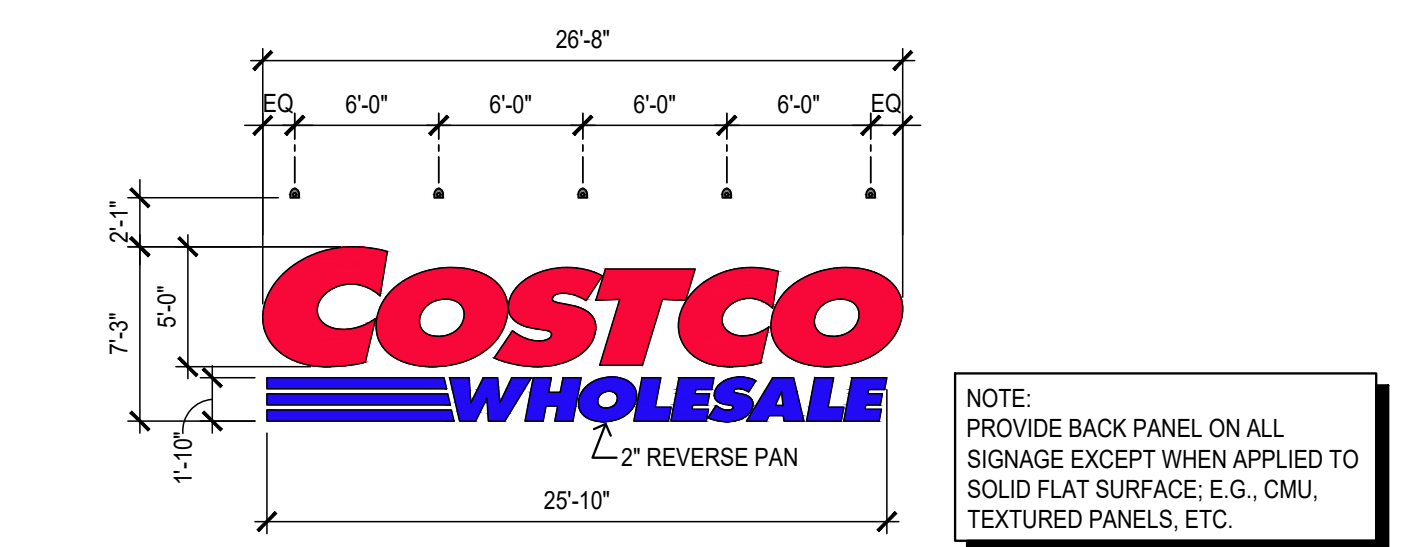
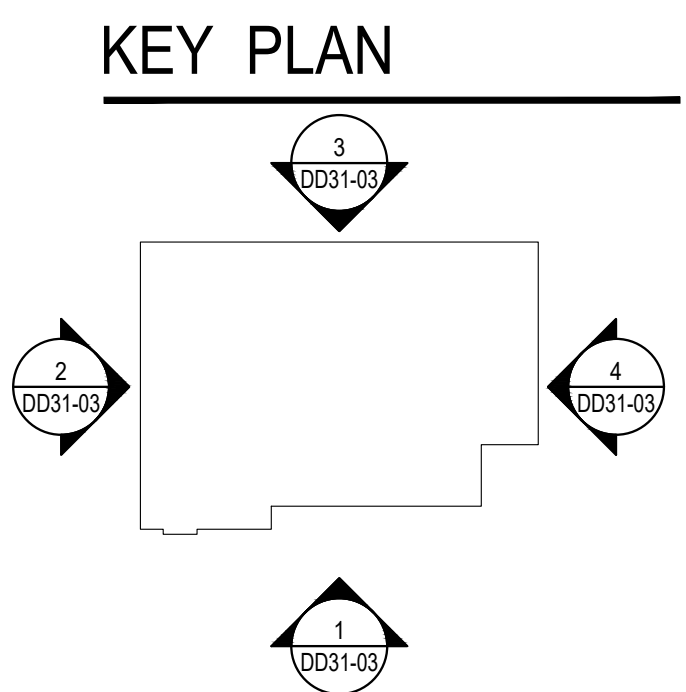
3 SOUTH ELEVATION
SCALE: 1/16" = 1'-0"



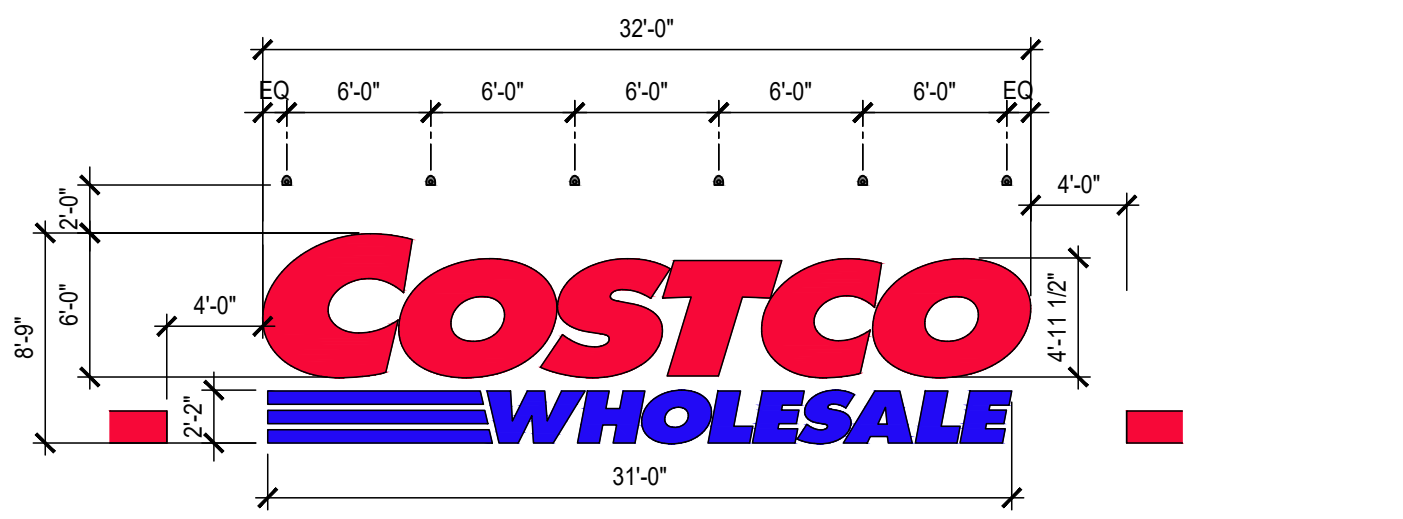
QTY	SIGN	SIZE	AREA (SF) EA	TOTAL SF
4	COSTCO WHOLESALE	6'-0" X 12'	280 SF	1120 SF
1	COSTCO WHOLESALE	5'-0" X 2'	194 SF	194 SF
1	LIQUOR SALES	18'-0" X 1'-9"	35 SF	35 SF
1	TIRE CENTER	17'-4" X 1'-9"	31 SF	31 SF
TOTAL SIGNAGE AREA				1380 SF



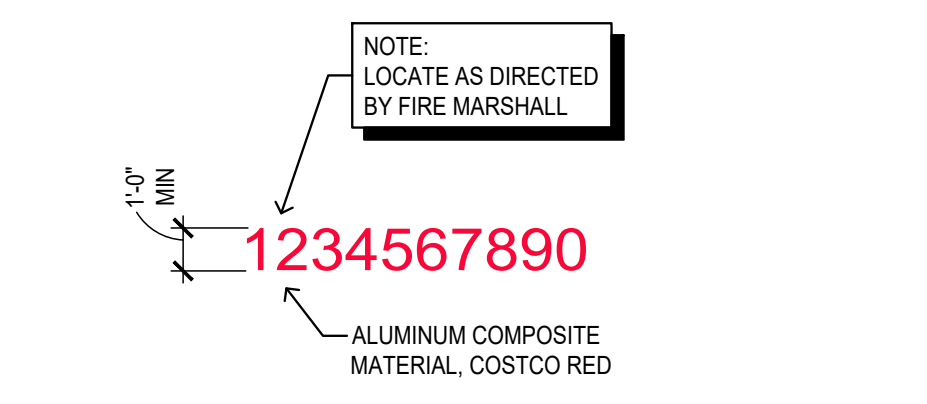
4 EAST ELEVATION
SCALE: 1/16" = 1'-0"



8 BUILDING SIGNAGE
SCALE: 1/8" = 1'-0" (SUPPLIED AND INSTALLED BY MBS) 0615



9 BUILDING SIGNAGE
SCALE: 1/8" = 1'-0" (SUPPLIED AND INSTALLED BY MBS) 1015



10 LOCATION SIGNAGE
SCALE: 1/8" = 1'-0" 1115

#	ITEM	MATERIAL	FINISH	COLOR	MFR \ NOTES	#	ITEM	MATERIAL	FINISH	COLOR	MFR \ NOTES	#	ITEM	MATERIAL	FINISH	COLOR	MFR \ NOTES	
1	METAL PANELS - IC72 VERTICAL	METAL	PRE-FINISHED	SANDSTONE	METAL SALES 1.1	20	COPING 1x4	SHEET METAL	PRE-FINISHED	'COOL HARVEST'	1	40	DOOR AND FRAME	STEEL	PAINT BY GC	MATCH WALL COLOR	2	
2	METAL PANELS - IC72 VERTICAL	METAL	PRE-FINISHED	'METALLIC CHAMPAGNE'	METAL SALES 1.1	21	CORNICE 'A'	SHEET METAL	PRE-FINISHED	'COOL HARVEST'	1	41	ROLLING SERVICE DOOR	STEEL	PAINT BY GC	TAN	1	
3	METAL PANELS - IC72 HORIZONTAL	METAL	PRE-FINISHED	'MEDIUM BRONZE'	METAL SALES 1.1	22	CORNICE 'B'	SHEET METAL	PRE-FINISHED	'COOL HARVEST'	1	42	GLAZED SECTIONAL DOOR	ALUMINUM	PRE-FINISHED	BRONZE	1	
4	ACCENT BAND	METAL	PRE-FINISHED	'SAFETY RED'		25	STANDING SEAM VSR	METAL	PRE-FINISHED	'COOL HARVEST'	1	43	AUTO-SLIDING DOOR	ALUMINUM	PRE-FINISHED	BRONZE		
9	CONCRETE CAST-IN-PLACE FINISH	ARCHITECTURAL FINISH	WATER REPELLANT	NATURAL		31	SCUPPER	SHEET METAL	PAINT BY GC	MATCH WALL	1	44	TRANSOM FRAMING	ALUMINUM	PRE-FINISHED	BRONZE		
10	CONCRETE PRECAST FINISH	ARCHITECTURAL FINISH	WATER REPELLANT	NATURAL		38	EMERGENCY LIGHT FIXTURE	METAL	PRE-FINISHED			45	GLAZING	INSULATED GLASS		CLEAR		
16	WALL CURB	CONCRETE	WATER REPELLANT									51	ACCENT CHANNEL	STEEL	PAINT BY GC	'COOL HARVEST'	1	
17	COLUMN PLINTH / BENCH	CONCRETE	WATER REPELLANT									53	HANDRAIL / GUARDRAIL	STEEL GALVANIZED	PAINT BY GC		2	
18	WALL REVEALS / CONTROL JOINT	CONCRETE	WATER REPELLANT									54	BOLLARD	STEEL PIPE CONCRETE FILL	PLASTIC SLEEVE	RED	2	
19	STAIRS	CONCRETE SAFETY NOSING	WATER REPELLANT		3													

NOTES:
1. SUPPLIED AND INSTALLED BY MBS
2. SUPPLIED BY MBS, INSTALLED BY GC
3. GRATE LANDING AND TRENDS WITH SAFETY NOSING